

**Price:** \$899,000 \$3.60/sqft

**Size:** 5.74 Acres

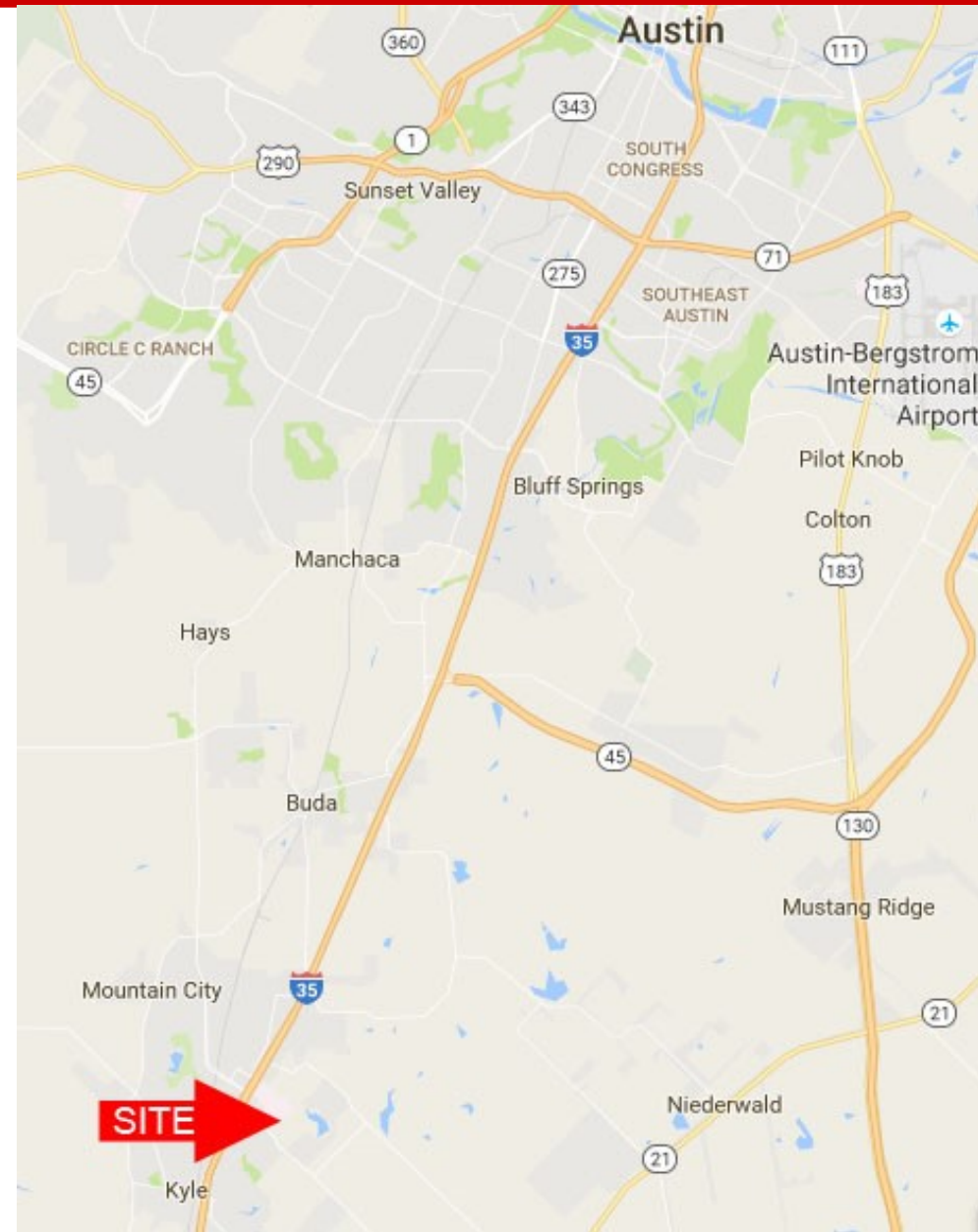
**Location:** 1600 Dacy Ln, near Seton-Kyle Hospital

**Access:** Directly from Dacy Ln

**Topo:** Sloping—great views to the West

**Utilities:** Electricity PEC  
Water City of Kyle  
Sewer City of Kyle nearby

**Note:** This area immediately East of the Seton-Kyle Medical Complex is rapidly developing as auxiliary medical and office. More office and apartments are still needed in this rapidly growing area. City has plans to extend Kyle Parkway further to the East opening up more of this prime area for development.



**John B. Sanford**

512-922-5633

Johnbsanford@gmail.com

www.johnbsanford.com

**J.D. Sanford**

512-924-1459

JDsanfordreal@gmail.com

The information contained herein is from sources deemed reliable, however John B. Sanford, his employees and his agents have not made an independent confirmation of the information and no warranty or guarantee of accuracy is made. A prospective tenant or buyer should confirm any important information with the assistance of an engineer and/or attorney during a feasibility period prior to closing the sale or leasing the property.

John B. Sanford Real Estate

5.74 Acres—Dacy Ln at Kyle Parkway

1600 Dacy Ln, Kyle, TX 78640



**John B. Sanford**

512-922-5633

Johnbsanford@gmail.com

www.johnbsanford.com

**J.D. Sanford**

512-924-1459

JDsanfordreal@gmail.com

The information contained herein is from sources deemed reliable, however John B. Sanford, his employees and his agents have not made an independent confirmation of the information and no warranty or guarantee of accuracy is made. A prospective tenant or buyer should confirm any important information with the assistance of an engineer and/or attorney during a feasibility period prior to closing the sale or leasing the property.

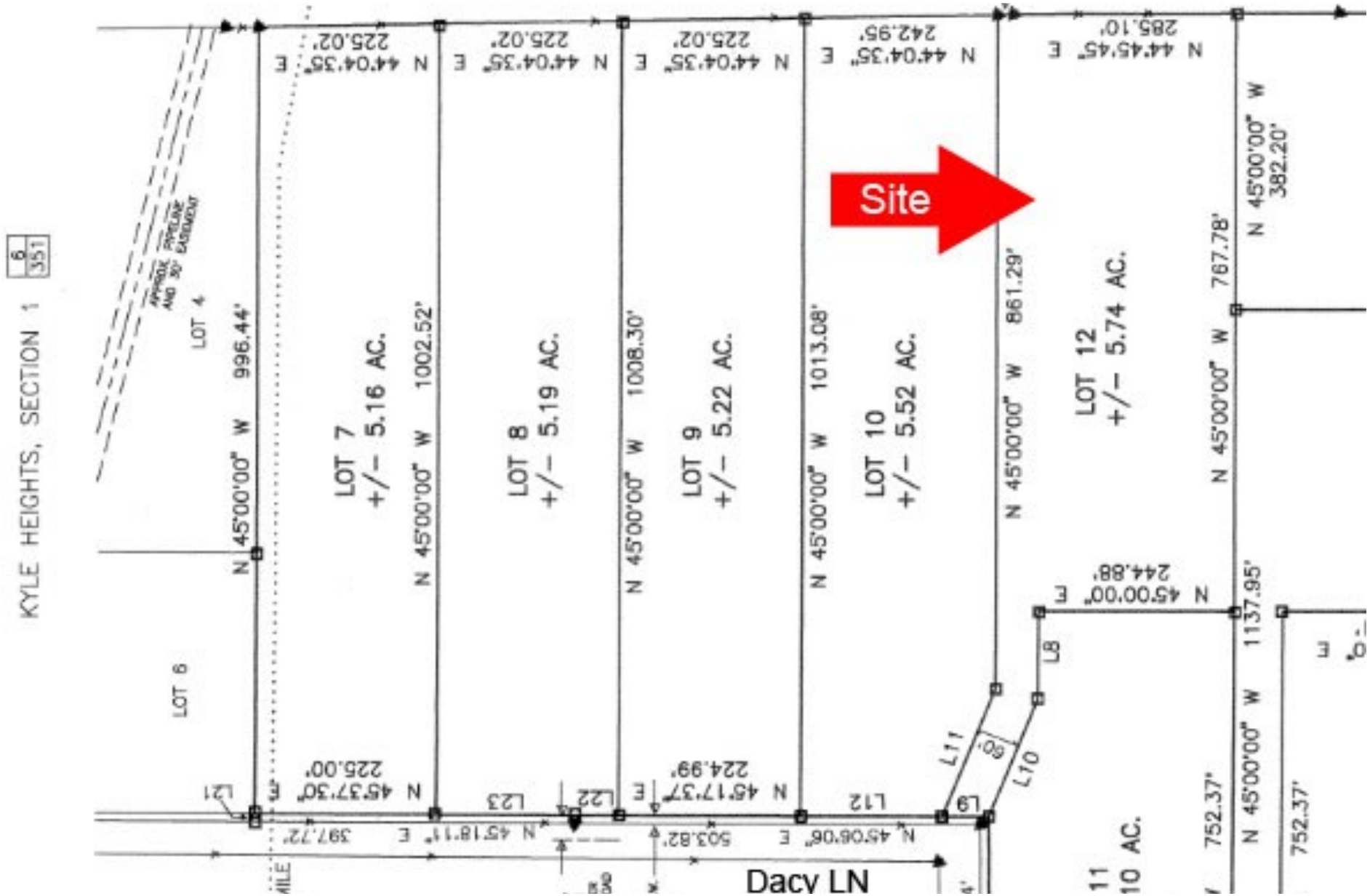


**JOHN B SANFORD**  
**REALTOR**  
512 - 312 -1301  
1600 DACY LN  
5.74 AC

**John B. Sanford**  
512-922-5633  
Johnbsanford@gmail.com  
www.johnbsanford.com

**J.D. Sanford**  
512-924-1459  
JDsanfordreal@gmail.com

The information contained herein is from sources deemed reliable, however John B. Sanford, his employees and his agents have not made an independent confirmation of the information and no warranty or guarantee of accuracy is made. A prospective tenant or buyer should confirm any important information with the assistance of an engineer and/or attorney during a feasibility period prior to closing the sale or leaving the property.



John B. Sanford  
512-922-5633  
Johnbsanford@gmail.com  
www.johnbsanford.com

J.D. Sanford  
512-924-1459  
JDsanfordreal@gmail.com

The information contained herein is from sources deemed reliable, however John B. Sanford, his employees and his agents have not made an independent confirmation of the information and no warranty or guarantee of accuracy is made. A prospective tenant or buyer should confirm any important information with the assistance of an engineer and/or attorney during a feasibility period prior to closing the sale or leasing the property.